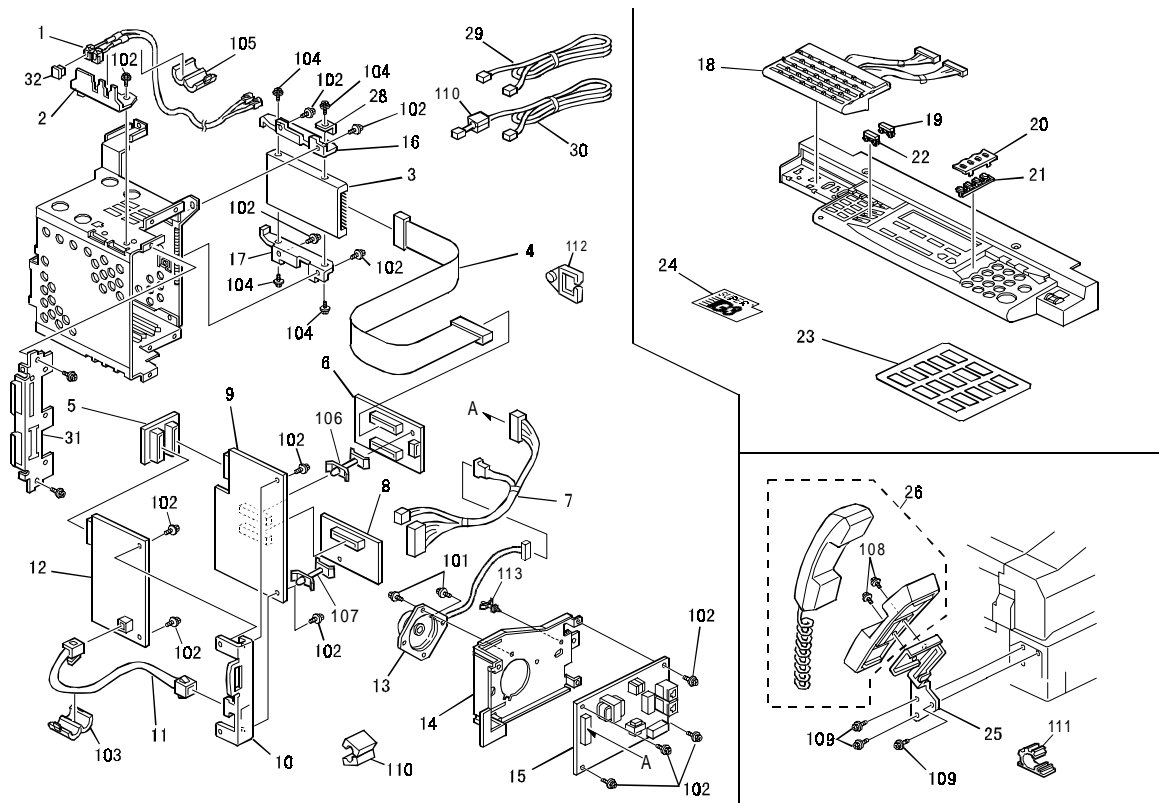


Model: NAD 30S/30/40 Fax Option		Date: 15-Jun-98	No: 1
Modified Article: Taiwan Version Information		Prepared by: S.Tomoe	
From: Technical Service Department			
Reason for Modification:	<input type="checkbox"/> Parts catalog correction	<input type="checkbox"/> Vendor change	<input type="checkbox"/> To meet standards
	<input type="checkbox"/> To facilitate assembly	<input type="checkbox"/> To improve reliability	()
	<input type="checkbox"/> Part standardization	<input checked="" type="checkbox"/> Other	

The following parts have been added to the Taiwan version.

Old part number	New part number	Description	Qty	Int	Page	Index	Note
	A2355371	Bracket	1		3	31	
	16070576	Ferrite Core – SFC-8 (TWN)	1		3	110	



Model: NAD 30S/30/40 Fax Option	Date: 15-Jun-98	No: 1
---------------------------------	-----------------	-------

MODEL NAME	V/Hz	DESTINATION	RAI PRODUCTION	
			CODE	SERIAL NUMBER
Fax Option Type 450	115/60	USA, Canada	A693-17	/
Fax Option Type 450	115/60	Taiwan	A693-19	
Fax Option Type 450	220,230 240/50	Europe, etc.	A693-27	
Fax Option Type 450	220,230 240/50,60	Asia	A693-29	
Fax Option Type 450	220,230 240/50	Europe, etc.	A693-67	
Fax Option Type 450	220,230 240/50	France	A693-68	
Fax Option Type 450	220,230 240/50	China	A693-69	

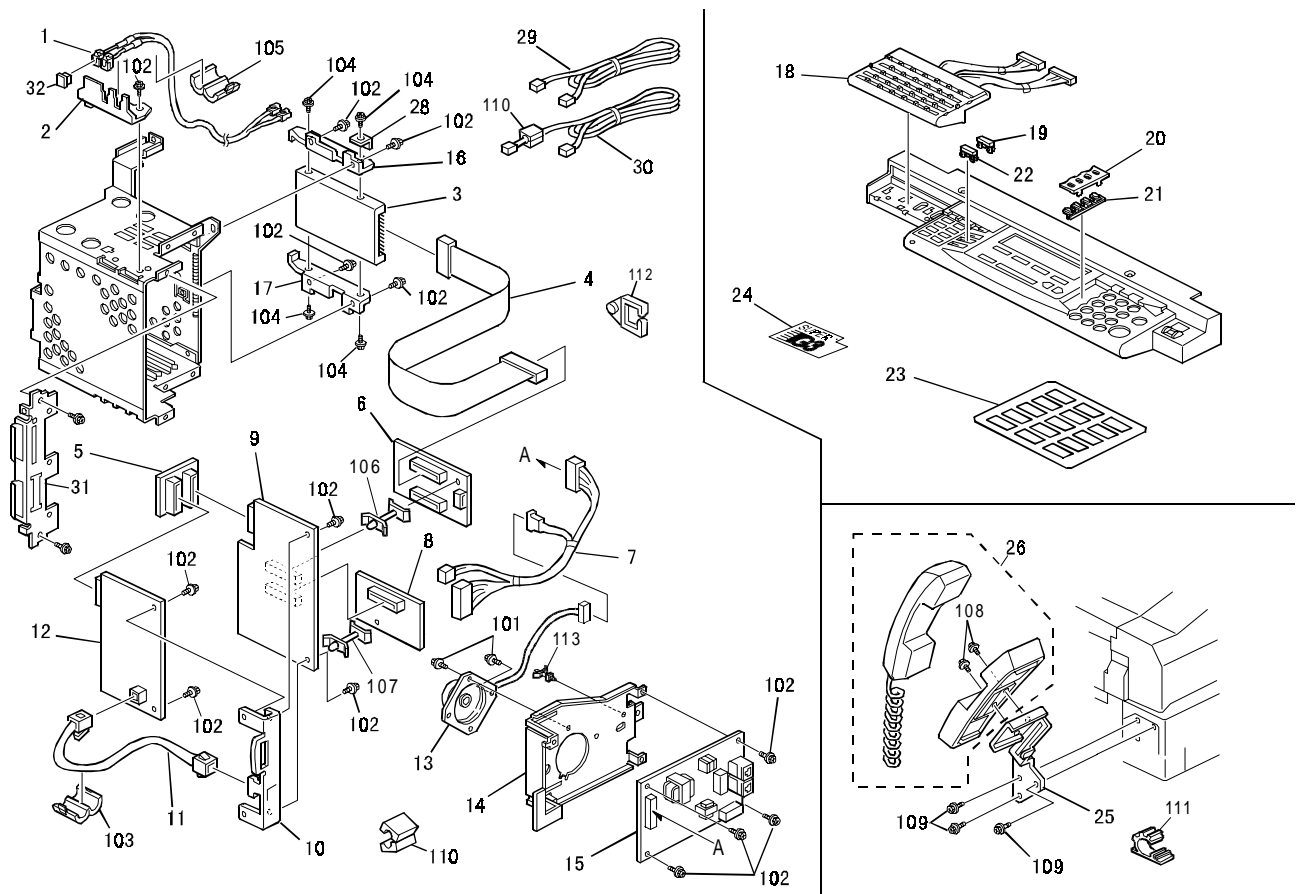
Model: NAD 30S/30/40 Fax Option		Date: 15-Jun-98	No: 2
Modified Article: PSTN Cable etc.		Prepared by: M.Mano	
From: Technical Service Department			
Reason for Modification:	<input checked="" type="checkbox"/> Parts catalog correction	<input type="checkbox"/> Vendor change	<input type="checkbox"/> To meet standards
	<input type="checkbox"/> To facilitate assembly	<input type="checkbox"/> To improve reliability	()
	<input type="checkbox"/> Part standardization	<input type="checkbox"/> Other	

1. The following parts should be corrected.

Old part Number	New part number	Description	Qty	Int	Page	Index Note	Note
H3025700	H0815700	PSTN Cable	1	X/O	3	29	
	H3025700	ISDN Cable	1		3	30	
	A2355371	Bracket	1		3	*31	Only for Taiwan
	H5044901	Cap Telephone Socket	1		3	*32	Except for N.A.

NOTE: Refer to the illustration below.

* New Index #



Model: NAD 30S/30/40 Fax Option	Date: 15-Jun-98	No: 2
---------------------------------	-----------------	-------

2. The following parts should be added.

2-1. North America (A693-17)



New part number	Description	Qty	Int	Page	Index	Note
A6938607	Operation Manual	1		3	*2 30	
A6938657	Manual CS	1		3	*2 31	
A6937220	FAX Operation Panel Ass' y (NA)	1		*1 7	*2 1	Refer to page 6/7
A2331572	Insulation OP Sheet	1		*1 7	*2 2	Refer to page 6/7
A2331575	OP Board	1		*1 7	*2 3	Refer to page 6/7
A2331573	Spacer Pin (2 pieces)	1		*1 7	*2 4	Refer to page 6/7
A2331574	OP Lower Cover	1		*1 7	*2 5	Refer to page 6/7
A2331552	OP Panel	1		*1 7	*2 6	Refer to page 6/7
A2331555	Label Quick Dial 22-28	1		*1 7	*2 7	Refer to page 6/7
A2331554	Label Quick Dial 15-21	1		*1 7	*2 8	Refer to page 6/7
A2331557	Label Quick Dial 36-42	1		*1 7	*2 9	Refer to page 6/7
A2331556	Label Quick Dial 29-35	1		*1 7	*2 10	Refer to page 6/7
A6937225	Label OP Panel	1		*1 7	*2 11	Refer to page 6/7
A2331563	Label Quick Dial 01-07	1		*1 7	*2 12	Refer to page 6/7
A2331564	Label Quick Dial 08-14	1		*1 7	*2 13	Refer to page 6/7
A2331562	Quick Dial Plate	1		*1 7	*2 14	Refer to page 6/7
A2331566	Label Quick Dial 50-56	1		*1 7	*2 15	Refer to page 6/7
A2331565	Label Quick Dial 43-49	1		*1 7	*2 16	Refer to page 6/7
A2331561	Quick Dial Plate Ass y	1		*1 7	*2 17	Refer to page 6/7
A2331571	Key Pad	1		*1 7	*2 18	Refer to page 6/7
04330102B	Tapping Screw	1		*1 7	*2 101	Refer to page 6/7

*¹ New Page #

*² New Index #

Model: NAD 30S/30/40 Fax Option	Date: 15-Jun-98	No: 2
---------------------------------	-----------------	-------

2-2. Taiwan (A693-19)

New part number	Description	Qty	Int	Page	Index	Note
A6938609	Operation Manual	1		3	*2 30	
A6938659	Manual CS	1		3	*2 31	
A6937222	FAX Operation Panel Ass'y (TWN)	1		*1 7	*2 1	Refer to page 6/7
A2331572	Insulation OP Sheet	1		*1 7	*2 2	Refer to page 6/7
A2331575	OP Board	1		*1 7	*2 3	Refer to page 6/7
A2331573	Spacer Pin (2 pieces)	1		*1 7	*2 4	Refer to page 6/7
A2331574	OP Lower Cover	1		*1 7	*2 5	Refer to page 6/7
A2331552	OP Panel	1		*1 7	*2 6	Refer to page 6/7
A2331555	Label Quick Dial 22-28	1		*1 7	*2 7	Refer to page 6/7
A2331554	Label Quick Dial 15-21	1		*1 7	*2 8	Refer to page 6/7
A2331557	Label Quick Dial 36-42	1		*1 7	*2 9	Refer to page 6/7
A2331556	Label Quick Dial 29-35	1		*1 7	*2 10	Refer to page 6/7
A6937296	Label OP Panel	1		*1 7	*2 11	Refer to page 6/7
A2331563	Label Quick Dial 01-07	1		*1 7	*2 12	Refer to page 6/7
A2331564	Label Quick Dial 08-14	1		*1 7	*2 13	Refer to page 6/7
A2331562	Quick Dial Plate	1		*1 7	*2 14	Refer to page 6/7
A2331566	Label Quick Dial 50-56	1		*1 7	*2 15	Refer to page 6/7
A2331565	Label Quick Dial 43-49	1		*1 7	*2 16	Refer to page 6/7
A2331561	Quick Dial Plate Ass'y	1		*1 7	*2 17	Refer to page 6/7
A2331571	Key Pad	1		*1 7	*2 18	Refer to page 6/7
04330102B	Tapping Screw	1		*1 7	*2 101	Refer to page 6/7

2-3. Europe (A693-27)

New part number	Description	Qty	Int	Page	Index	Note
A6937221	FAX Operation Panel Ass'y (EU)	1		*1 7	*2 1	Refer to page 6/7
A2331572	Insulation OP Sheet	1		*1 7	*2 2	Refer to page 6/7
A2331575	OP Board	1		*1 7	*2 3	Refer to page 6/7
A2331573	Spacer Pin (2 pieces)	1		*1 7	*2 4	Refer to page 6/7
A2331574	OP Lower Cover	1		*1 7	*2 5	Refer to page 6/7
A2331552	OP Panel	1		*1 7	*2 6	Refer to page 6/7
A2331555	Label Quick Dial 22-28	1		*1 7	*2 7	Refer to page 6/7
A2331554	Label Quick Dial 15-21	1		*1 7	*2 8	Refer to page 6/7
A2331557	Label Quick Dial 36-42	1		*1 7	*2 9	Refer to page 6/7
A2331556	Label Quick Dial 29-35	1		*1 7	*2 10	Refer to page 6/7
A2331563	Label Quick Dial 01-07	1		*1 7	*2 12	Refer to page 6/7
A2331564	Label Quick Dial 08-14	1		*1 7	*2 13	Refer to page 6/7
A2331562	Quick Dial Plate	1		*1 7	*2 14	Refer to page 6/7
A2331566	Label Quick Dial 50-56	1		*1 7	*2 15	Refer to page 6/7
A2331565	Label Quick Dial 43-49	1		*1 7	*2 16	Refer to page 6/7
A2331561	Quick Dial Plate Ass'y	1		*1 7	*2 17	Refer to page 6/7
A2331571	Key Pad	1		*1 7	*2 18	Refer to page 6/7
04330102B	Tapping Screw	1		*1 7	*2 101	Refer to page 6/7

Model: NAD 30S/30/40 Fax Option	Date: 15-Jun-98	No: 2
---------------------------------	-----------------	-------

2-4. Asia (A693-29)

New part number	Description	Qty	Int	Page	Index	Note
A6938608	Operation Manual	1		3	*2 30	
A6938658	Manual CS	1		3	*2 31	
A6937220	FAX Operation Panel Ass' y (NA)	1		*1 7	*2 1	Refer to page 6/7
A2331572	Insulation OP Sheet	1		*1 7	*2 2	Refer to page 6/7
A2331575	OP Board	1		*1 7	*2 3	Refer to page 6/7
A2331573	Spacer Pin (2 pieces)	1		*1 7	*2 4	Refer to page 6/7
A2331574	OP Lower Cover	1		*1 7	*2 5	Refer to page 6/7
A2331552	OP Panel	1		*1 7	*2 6	Refer to page 6/7
A2331555	Label Quick Dial 22-28	1		*1 7	*2 7	Refer to page 6/7
A2331554	Label Quick Dial 15-21	1		*1 7	*2 8	Refer to page 6/7
A2331557	Label Quick Dial 36-42	1		*1 7	*2 9	Refer to page 6/7
A2331556	Label Quick Dial 29-35	1		*1 7	*2 10	Refer to page 6/7
A6937225	Label OP Panel	1		*1 7	*2 11	Refer to page 6/7
A2331563	Label Quick Dial 01-07	1		*1 7	*2 12	Refer to page 6/7
A2331564	Label Quick Dial 08-14	1		*1 7	*2 13	Refer to page 6/7
A2331562	Quick Dial Plate	1		*1 7	*2 14	Refer to page 6/7
A2331566	Label Quick Dial 50-56	1		*1 7	*2 15	Refer to page 6/7
A2331565	Label Quick Dial 43-49	1		*1 7	*2 16	Refer to page 6/7
A2331561	Quick Dial Plate Ass y	1		*1 7	*2 17	Refer to page 6/7
A2331571	Key Pad	1		*1 7	*2 18	Refer to page 6/7
04330102B	Tapping Screw	1		*1 7	*2 101	Refer to page 6/7

2-5. U.K. (A693-67)

New part number	Description	Qty	Int	Page	Index	Note
A6938600	Operation Manual	1		3	*2 30	
A6938650	Manual CS	1		3	*2 30	
A6937221	FAX Operation Panel Ass' y (EU)	1		*1 7	*2 1	Refer to page 6/7
A2331572	Insulation OP Sheet	1		*1 7	*2 2	Refer to page 6/7
A2331575	OP Board	1		*1 7	*2 3	Refer to page 6/7
A2331573	Spacer Pin (2 pieces)	1		*1 7	*2 4	Refer to page 6/7
A2331574	OP Lower Cover	1		*1 7	*2 5	Refer to page 6/7
A2331552	OP Panel	1		*1 7	*2 6	Refer to page 6/7
A2331555	Label Quick Dial 22-28	1		*1 7	*2 7	Refer to page 6/7
A2331554	Label Quick Dial 15-21	1		*1 7	*2 8	Refer to page 6/7
A2331557	Label Quick Dial 36-42	1		*1 7	*2 9	Refer to page 6/7
A2331556	Label Quick Dial 29-35	1		*1 7	*2 10	Refer to page 6/7
A2331563	Label Quick Dial 01-07	1		*1 7	*2 12	Refer to page 6/7
A2331564	Label Quick Dial 08-14	1		*1 7	*2 13	Refer to page 6/7
A2331562	Quick Dial Plate	1		*1 7	*2 14	Refer to page 6/7
A2331566	Label Quick Dial 50-56	1		*1 7	*2 15	Refer to page 6/7
A2331565	Label Quick Dial 43-49	1		*1 7	*2 16	Refer to page 6/7
A2331561	Quick Dial Plate Ass y	1		*1 7	*2 17	Refer to page 6/7
A2331571	Key Pad	1		*1 7	*2 18	Refer to page 6/7
04330102B	Tapping Screw	1		*1 7	*2 101	Refer to page 6/7

Model: NAD 30S/30/40 Fax Option	Date: 15-Jun-98	No: 2
---------------------------------	-----------------	-------

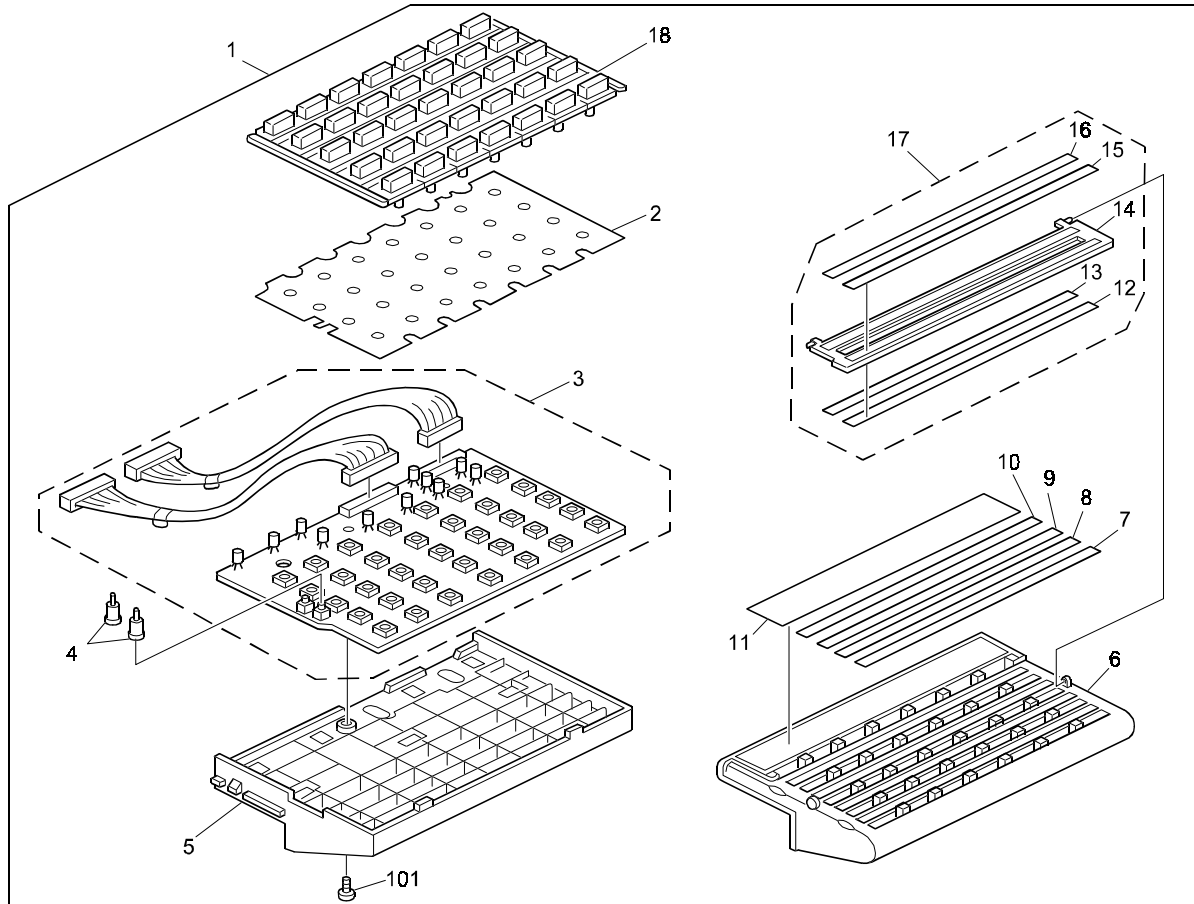
2-6. France (A693-68)

New part Number	Description	Qty	Int	Page	Index	Note
A6938602	Operation Manual	1		3	*2 30	
A6938652	Manual CS	1		3	*2 30	
A6937221	FAX Operation Panel Ass' y (EU)	1		*1 7	*2 1	Refer to page 6/7
A2331572	Insulation OP Sheet	1		*1 7	*2 2	Refer to page 6/7
A2331575	OP Board	1		*1 7	*2 3	Refer to page 6/7
A2331573	Spacer Pin (2 pieces)	1		*1 7	*2 4	Refer to page 6/7
A2331574	OP Lower Cover	1		*1 7	*2 5	Refer to page 6/7
A2331552	OP Panel	1		*1 7	*2 6	Refer to page 6/7
A2331555	Label Quick Dial 22-28	1		*1 7	*2 7	Refer to page 6/7
A2331554	Label Quick Dial 15-21	1		*1 7	*2 8	Refer to page 6/7
A2331557	Label Quick Dial 36-42	1		*1 7	*2 9	Refer to page 6/7
A2331556	Label Quick Dial 29-35	1		*1 7	*2 10	Refer to page 6/7
A2331563	Label Quick Dial 01-07	1		*1 7	*2 12	Refer to page 6/7
A2331564	Label Quick Dial 08-14	1		*1 7	*2 13	Refer to page 6/7
A2331562	Quick Dial Plate	1		*1 7	*2 14	Refer to page 6/7
A2331566	Label Quick Dial 50-56	1		*1 7	*2 15	Refer to page 6/7
A2331565	Label Quick Dial 43-49	1		*1 7	*2 16	Refer to page 6/7
A2331561	Quick Dial Plate Ass y	1		*1 7	*2 17	Refer to page 6/7
A2331571	Key Pad	1		*1 7	*2 18	Refer to page 6/7
04330102B	Tapping Screw	1		*1 7	*2 101	Refer to page 6/7

2-7. China (A693-69)

New part Number	Description	Qty	Int	Page	Index	Note
A6938606	Operation Manual	1		3	*2 30	
A6938656	Manual CS	1		3	*2 31	
A6937223	FAX Operation Panel Ass' y (CHN)	1		*1 7	*2 1	Refer to page 6/7
A2331572	Insulation OP Sheet	1		*1 7	*2 2	Refer to page 6/7
A2331575	OP Board	1		*1 7	*2 3	Refer to page 6/7
A2331573	Spacer Pin (2 pieces)	1		*1 7	*2 4	Refer to page 6/7
A2331574	OP Lower Cover	1		*1 7	*2 5	Refer to page 6/7
A2331552	OP Panel	1		*1 7	*2 6	Refer to page 6/7
A2331555	Label Quick Dial 22-28	1		*1 7	*2 7	Refer to page 6/7
A2331554	Label Quick Dial 15-21	1		*1 7	*2 8	Refer to page 6/7
A2331557	Label Quick Dial 36-42	1		*1 7	*2 9	Refer to page 6/7
A2331556	Label Quick Dial 29-35	1		*1 7	*2 10	Refer to page 6/7
A6937928	Label OP Panel	1		*1 7	*2 11	Refer to page 6/7
A2331563	Label Quick Dial 01-07	1		*1 7	*2 12	Refer to page 6/7
A2331564	Label Quick Dial 08-14	1		*1 7	*2 13	Refer to page 6/7
A2331562	Quick Dial Plate	1		*1 7	*2 14	Refer to page 6/7
A2331566	Label Quick Dial 50-56	1		*1 7	*2 15	Refer to page 6/7
A2331565	Label Quick Dial 43-49	1		*1 7	*2 16	Refer to page 6/7
A2331561	Quick Dial Plate Ass y	1		*1 7	*2 17	Refer to page 6/7
A2331571	Key Pad	1		*1 7	*2 18	Refer to page 6/7
04330102B	Tapping Screw	1		*1 7	*2 101	Refer to page 6/7





Model: NAD 30S/30/40 Fax Option	Date: 15-Jun-98	No: 2
---------------------------------	-----------------	-------

MODEL NAME	V/Hz	DESTINATION	RAI PRODUCTION	
			CODE	SERIAL NUMBER
Fax Option Type 450	115/60	USA, Canada	A693-17	/
Fax Option Type 450	115/60	Taiwan	A693-19	
Fax Option Type 450	220,230 240/50	Europe, etc.	A693-27	
Fax Option Type 450	220,230 240/50,60	Asia	A693-29	
Fax Option Type 450	220,230 240/50	Europe, etc.	A693-67	
Fax Option Type 450	220,230 240/50	France	A693-68	
Fax Option Type 450	220,230 240/50	China	A693-69	

Model: NAD 30S/30/40 (Fax Option)		Date: 21-Mar-00	No.: MA693003
Modified Article: Hard Disk		Prepared by: E. Fukuyama	
From: Technical Services Dept., GTS Division			
Reason for Modification:	<input type="checkbox"/> Parts catalog correction <input type="checkbox"/> To facilitate assembly <input type="checkbox"/> Part standardization	<input checked="" type="checkbox"/> Vendor change <input type="checkbox"/> To improve reliability <input type="checkbox"/> Other	<input type="checkbox"/> To meet standards ()

The hard disk for the Fax Option Type 450 has been changed because production of the old one has been discontinued.

Old part number	New part number	Description	Q'ty	Int	Page	Index	Note
H5157119	B3497000	Hard Disk	1	O/O	3	3	

Model: NAD 30S/30/40 Fax option		Date: 13-Feb-02	No.: MA693004
Modified Article: Cover - Operation Panel - Fax		Prepared by: E.Fukuyama	
From: Technical Services Dept., GTS Division			
Reason for Modification:	<input type="checkbox"/> Parts catalog correction	<input type="checkbox"/> Vendor change	<input type="checkbox"/> To meet standards ()
	<input type="checkbox"/> To facilitate assembly	<input type="checkbox"/> To improve reliability	
	<input type="checkbox"/> Part standardization	<input checked="" type="checkbox"/> Other	

The part number for the Operation Panel has been changed for purposes of factory parts management.

Old part number	New part number	Description	Q'ty	Int	Page	Index	Note
A2331552	A6937224	OP Panel Cover – Operation panel – Fax (NA)	1-1	X/O	7	6	
A2331552	A6937624	OP Panel Cover – Operation Panel – Fax (EU)	1-1	X/O	7	6	
A2331552	A6937927	OP Panel Cover – Operation Panel – Fax (CHN)	1-1	X/O	7	6	
A2331552	A6937925	OP Panel Cover – Operation Panel – Fax (TWN)	1-1	X/O	7	6	

